



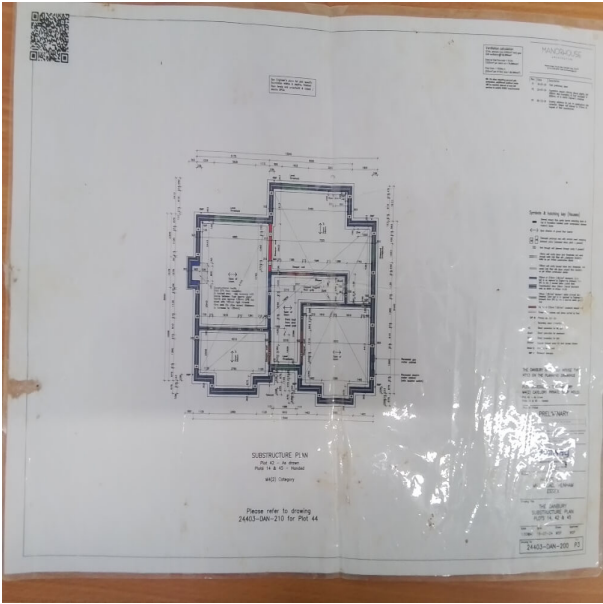
Pre-Inspection Checklist Sub Structure Block Work to FFL	
Project: Henham	Date: 22 July 2025
Area: Site	Am / Pm: AM
Locaton: Plot 42	Drawing Number: 24403-dan-200
Weather Condition: Mixed	Sheet Number: N/A

Table of Contents

- Setting Out Line & Level to Current Drawings
- Product Material Compliant With Engineers/Architect Specification
- Specified Bedding Depth, Colour & Mlxing Ratio to Specification
- Specified DPC Installed & at Correct Level
- Specified Wall Ties & Air Vents Installed at Correct Location & Height
- DPC / Membrane Installed as Per Specification
- Brick Type
- Lintel Bearing

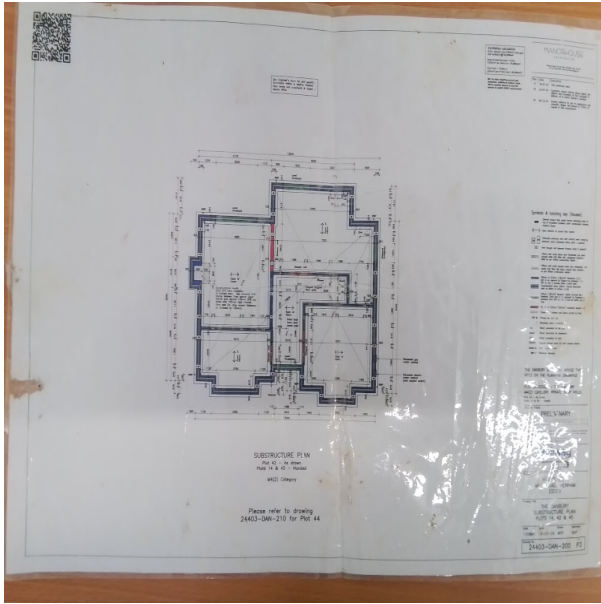
Completed By: RG

Date Completed: 22 July 2025



Completed By: RG

Date Completed: 22 July 2025



Completed By: RG

Date Completed: 22 July 2025



Specified DPC Installed & at Correct Level

Completed By: RG

Date Completed: 22 July 2025

Completed By: RG

Date Completed: 22 July 2025



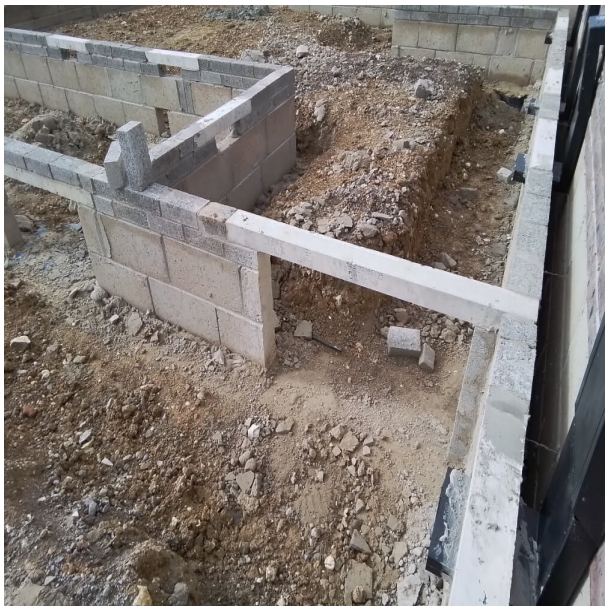
Completed By: RG
Date Completed: 22 July 2025

Completed By: Rg
Date Completed: 22 July 2025



Completed By: RG

Date Completed: 22 July 2025



Proceed/not proceed

Reason for Rejection/Comments: na

Signed for HOULIHAN: RG

Date: 2025-07-22

Signed for client by:

Date:

The above inspections have been carried out and are acceptable/unacceptable

Non Conformities/Comments

Reason for non Conformities/Comments: na

Signed for HOULIHAN: RG

Date: 2025-07-22

Signed for client by:

Date: